

PLEASE CHECK WWW.MOLEX.COM FOR LATEST PART INFORMATION

Part Number: [0529910308](#)
Status: **Active**
Description: 0.50mm (.020") Pitch SlimStack™ Receptacle, Surface Mount, Dual Row, Vertical, 3.00 and 4.00mm (.118 and .157") Stacking Heights, Lower Circuit Size Version, White, 30 Circuits

Documents:

3D Model	Product Specification PS-52991-008 (PDF)
Drawing (PDF)	Product Specification PS-54167-002 (PDF)
Product Specification PS-52991-003 (PDF)	RoHS Certificate of Compliance (PDF)

General

Product Family	PCB Receptacles
Series	52991
Application	Board-to-Board
Product Name	SlimStack™

Physical

Circuits (Loaded)	30
Glow-Wire Compliant	No
Mated Height (in)	0.118 In, 0.157 In
Mated Height (mm)	3.00 mm, 4.00 mm
Material - Plating Mating	Gold
Material - Plating Termination	Gold
Number of Rows	2
Orientation	Vertical
PCB Locator	No
PCB Retention	None
Packaging Type	Embossed Tape on Reel
Pitch - Mating Interface (in)	0.020 In
Pitch - Mating Interface (mm)	0.50 mm
Plating min: Mating (µin)	4
Plating min: Mating (µm)	0.1
Plating min: Termination (µin)	10
Plating min: Termination (µm)	0.25
Polarized to PCB	No
Surface Mount Compatible (SMC)	N/A
Temperature Range - Operating	-40°C to +105°C
Termination Interface: Style	Surface Mount

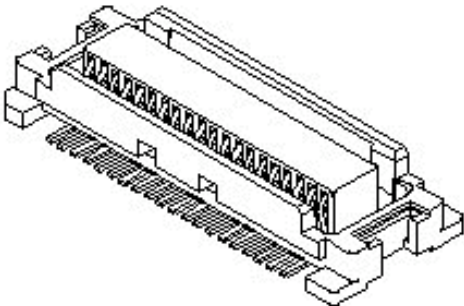
Electrical

Current - Maximum per Contact	0.5A
Voltage - Maximum	50V

Material Info

Reference - Drawing Numbers

Product Specification	PS-52991-003, PS-52991-008, PS-54167-002, RPS-52991-012, RPS-52991-013, RPS-52991-016, RPS-52991-017, RPS-52991-019
Sales Drawing	SD-52991-004, SD-52991-005



Series

image - Reference only

EU RoHS

**ELV and RoHS
Compliant**

REACH SVHC

Not Reviewed

Halogen-Free

Status

Halogen-Free

China RoHS



**Need more information on product
environmental compliance?**

Email productcompliance@molex.com
For a multiple part number RoHS Certificate of Compliance, [click here](#)

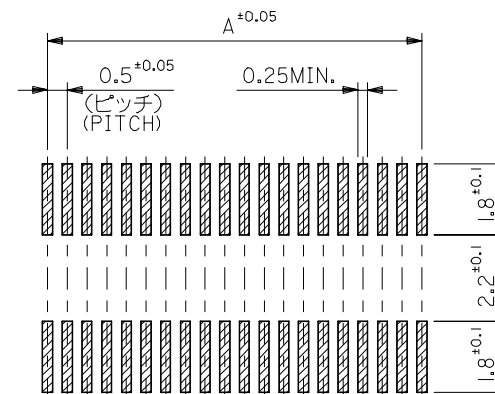
Please visit the [Contact Us](#) section for any non-product compliance questions.

Search Parts in this Series

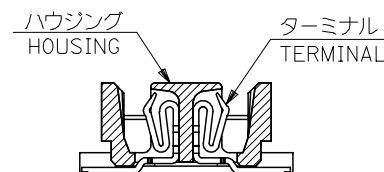
[52991Series](#)

Mates With

[53916](#) , [53748](#)



P.C.BOARD PATTERN
DIMENSION. (REF.)
(MOUNTING AREA)

SECT.Z-Z

1. 使用材料 MATERIAL
ハウジング：LCPガラス入り（白），UL94V-0
HOUSING:LCP(G.F.)(COLOR:WHITE),UL94V-0
ターミナル：リン青銅（ $t=0.15$ ）
TERMINAL:PHOSPHOR BRONZE($t=0.15$)

2. メッキ仕様 PLATING
全体仕上げ: 金メッキ 0.1 MICROMETER MIN.
ALL OVER: GOLD 0.1 MICROMETER MIN.
下地メッキ: ニッケルメッキ 1.5 MICROMETER MIN.
UNDER PLATING: NICKEL 1.5 MICROMETER MIN.

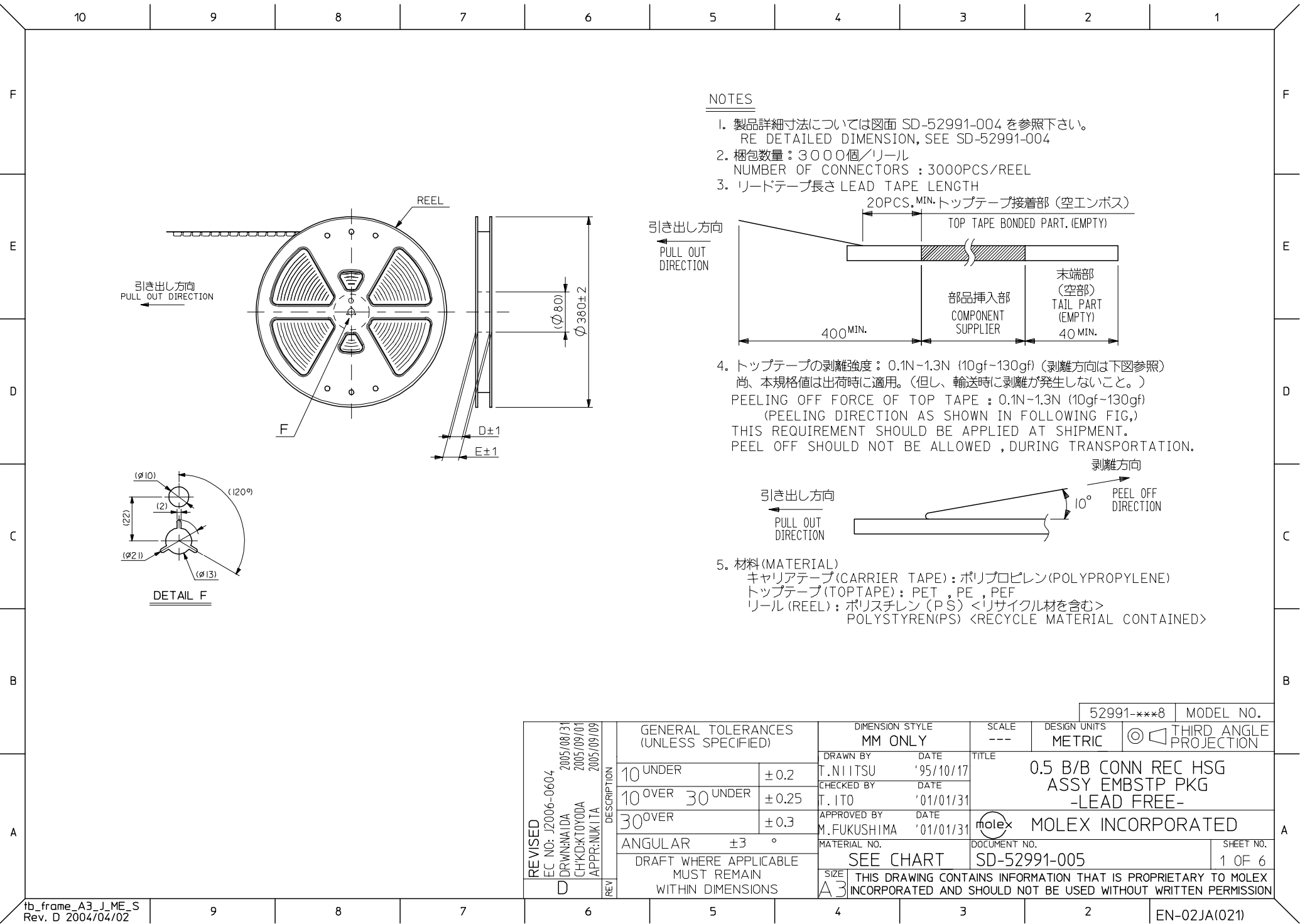
3. 基準面 ☒ からの溶剤テールの半田付け面のズレ量は、上方向 0、下方向 0.15MAX. とする。
MISALIGNMENT OF SOLDER TAIL FROM ☒
: UPPER DIRECTION 0, LOWER DIRECTION 0.15 MAX.

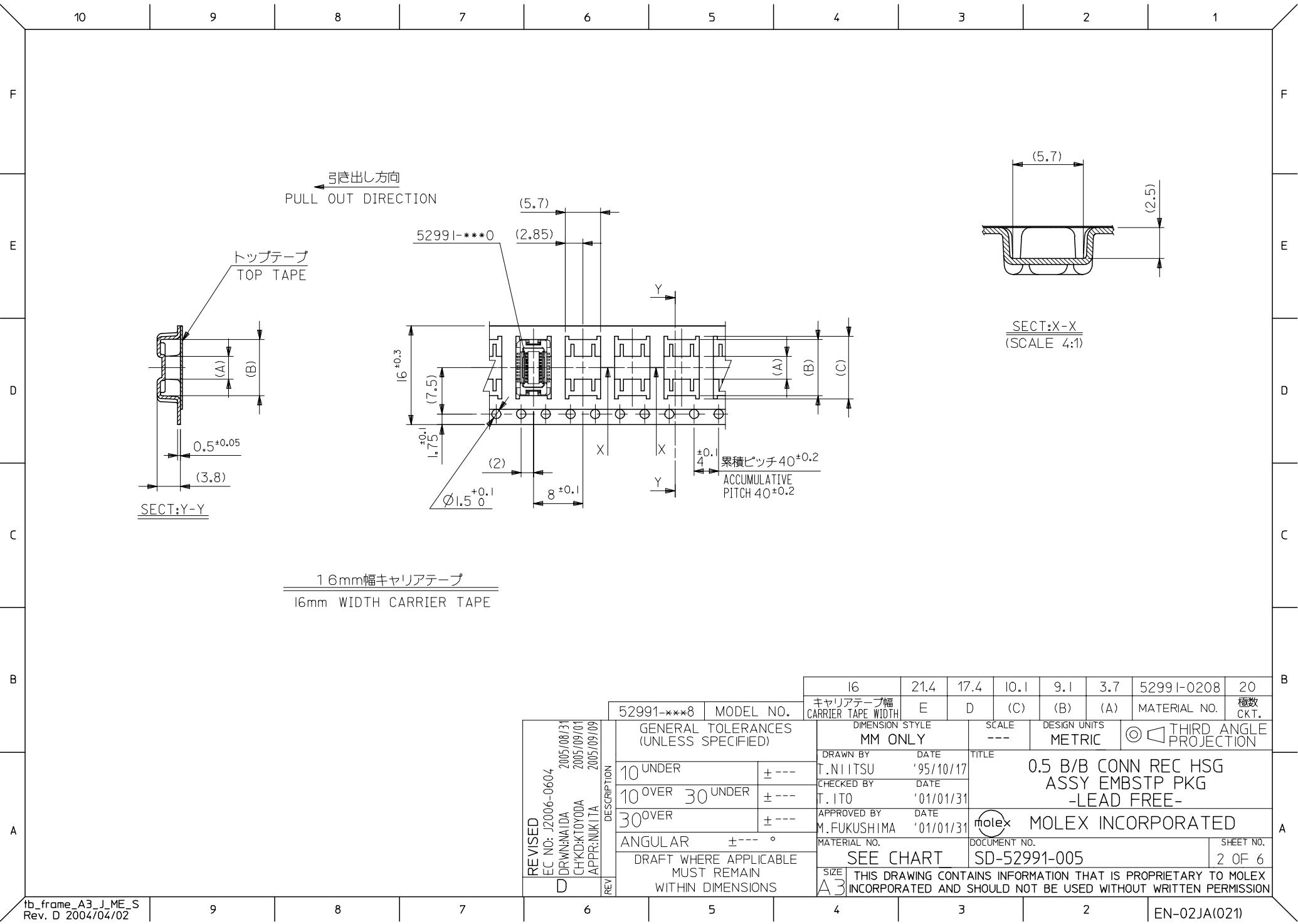
△4 (全極数/2) = 偶数の場合に適用。
APPLY FOR (CIRCUIT/2)=EVEN.

- 5 嵌合相手: 53748 シリーズ 53916 シリーズ 502280 シリーズ
MATE WITH : 53748 SERIES, 53916 SERIES, 502280 SERIES.
6 テール平坦度は、0.IMAX.
TAIL COPLANARITY TO BE 0.IMAX.

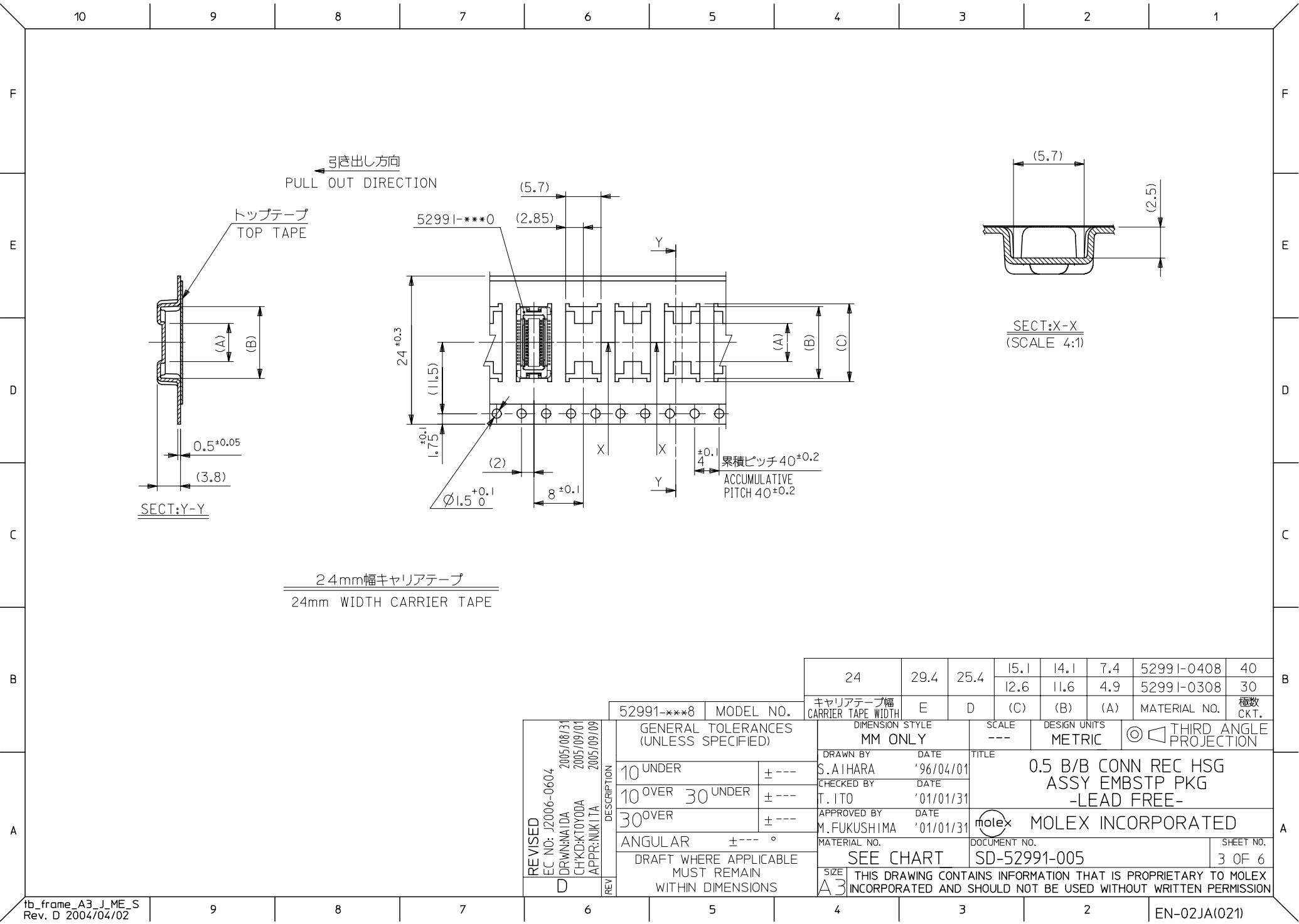
23.8	20.2	19.5	52991-0800	80
21.3	17.7	17.0	-0700	70
18.8	15.2	14.5	-0600	60
16.3	12.7	12.0	-0500	50
13.8	10.2	9.5	-0400	40
11.3	7.7	7.0	-0300	30
8.8	5.2	4.5	52991-0200	20
C	B	A	MATERIAL NO.	極數 CIRCUIT

REVISED EC NO: J2007-0273 DRAWN: TENAGASE CHKD: THARIYAMA APPR: NUKITA	DESCRIPTION	GENERAL TOLERANCES (UNLESS SPECIFIED)		DIMENSION STYLE MM ONLY		SCALE 8:1	DESIGN UNITS METRIC	THIRD ANGLE PROJECTION		
		10 UNDER	± 0.2	DRAWN BY S. AIHARA	DATE '96/02/27	TITLE 0.5 B/B CONN REC HOUSING ASSY(W/O BOSS, W/O NAIL) -LEAD FREE-				
		10 OVER 30 UNDER	± 0.25	CHECKED BY M. SASAO	DATE '01/12/26					
		30 OVER	± 0.3	APPROVED BY M. SASAO	DATE '01/12/26	MOLEX MOLEX INCORPORATED				
		ANGULAR ±3 °		MATERIAL NO.		DOCUMENT NO.		SHEET NO.		
	DRAFT WHERE APPLICABLE MUST REMAIN WITHIN DIMENSIONS		SEE CHART		SD-52991-004		1 OF 1			
	REV	D	THIS DRAWING CONTAINS INFORMATION THAT IS PROPRIETARY TO MOLEX INCORPORATED AND SHOULD NOT BE USED WITHOUT WRITTEN PERMISSION							

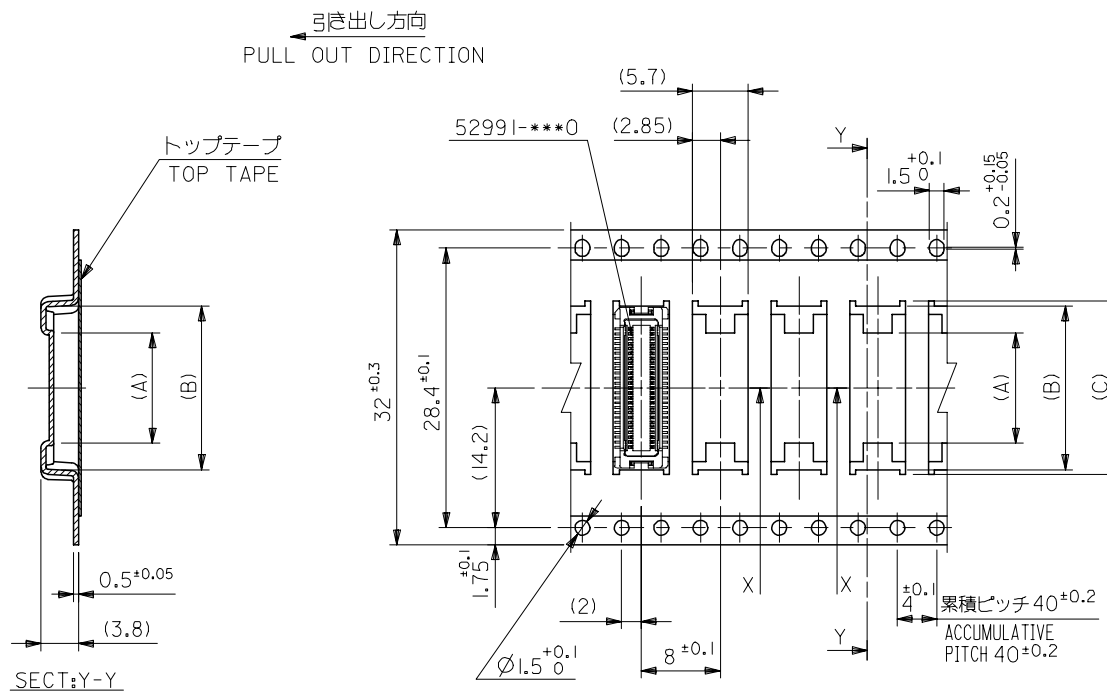




REVISED		EC NO: J2006-0604	2005/08/31	2005/09/01	2005/09/09	DESCRIPTION		REV	
D		DRWN:NAIDA	CHKD:TOYODA	APPR:NUKITA					
GENERAL TOLERANCES (UNLESS SPECIFIED)		10 UNDER		± ---		10 OVER 30 UNDER		± ---	
30 OVER		± ---		ANGULAR		± --- °		DRAFT WHERE APPLICABLE MUST REMAIN WITHIN DIMENSIONS	
52991-***8		MODEL NO.		I6		21.4		17.4	
10.1		9.1		3.7		52991-0208		20	
キャリアテープ幅		E		D		(C)		(B)	
CARRIER TAPE WIDTH		SCALE ---		DESIGN UNITS METRIC		THIRD ANGLE PROJECTION		MATERIAL NO.	
DRAWN BY T.NIITSU		DATE '95/10/17		CHECKED BY T.ITO		DATE '01/01/31		APPROVED BY M.FUKUSHIMA	
DATE '01/01/31		TITLE		0.5 B/B CONN REC HSG ASSY EMBSTP PKG -LEAD FREE-		MOLEX INCORPORATED		SHEET NO. 2 OF 6	
MATERIAL NO.		DOCUMENT NO.		SD-52991-005		SIZE A3		THIS DRAWING CONTAINS INFORMATION THAT IS PROPRIETARY TO MOLEX INCORPORATED AND SHOULD NOT BE USED WITHOUT WRITTEN PERMISSION	
SEE CHART		SD-52991-005		EN-02JA(021)					

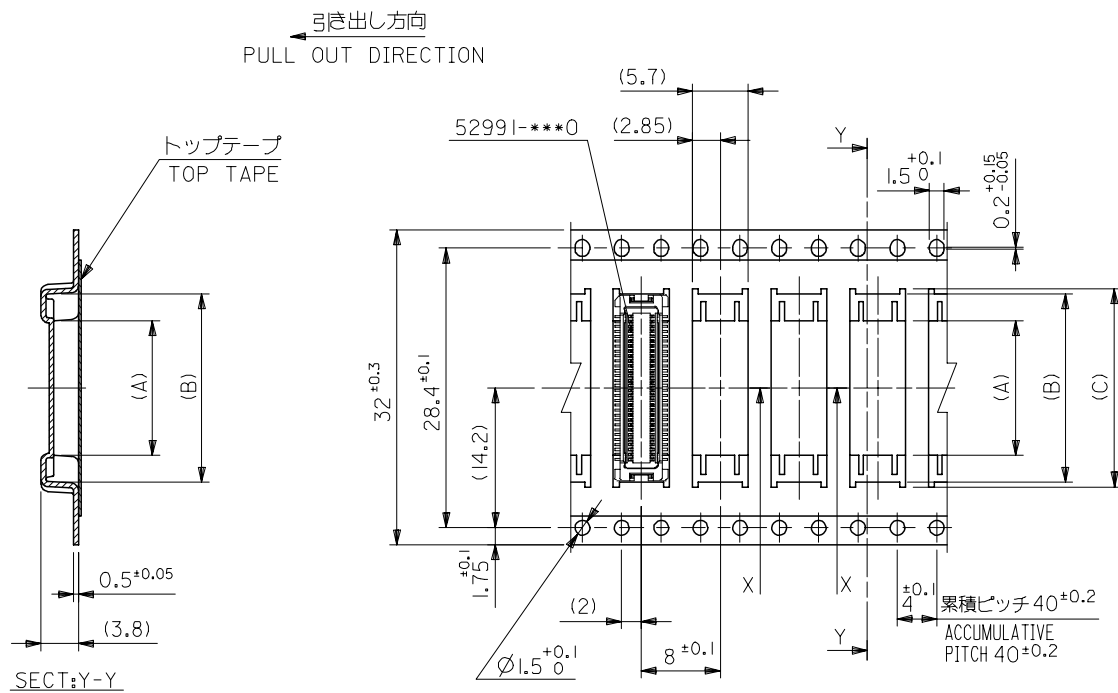


REVISED	EC NO: J2006-0604	DRWN:NAIDA 2005/08/31	CHKD:KTOYODA 2005/09/01	APPR:NUKITA 2005/09/09	DESCRIPTION	52991-***8		MODEL NO.	24	29.4	25.4	15.1	14.1	7.4	52991-0408	40	
D	REV	GENERAL TOLERANCES (UNLESS SPECIFIED)		DIMENSION STYLE MM ONLY				SCALE ---		DESIGN UNITS METRIC		THIRD ANGLE PROJECTION					
		10 UNDER	± ---	DRAWN BY S.AIHARA		DATE '96/04/01		TITLE 0.5 B/B CONN REC HSG ASSY EMBSTP PKG -LEAD FREE-									
		10 OVER 30 UNDER	± ---	CHECKED BY T. ITO		DATE '01/01/31											
		30 OVER	± ---	APPROVED BY M.FUKUSHIMA		DATE '01/01/31		MOLEX MOLEX INCORPORATED									
		ANGULAR	± --- °	MATERIAL NO.		DOCUMENT NO.								SHEET NO.			
DRAFT WHERE APPLICABLE MUST REMAIN WITHIN DIMENSIONS		SIZE A3		SEE CHART		SD-52991-005		3 OF 6									
THIS DRAWING CONTAINS INFORMATION THAT IS PROPRIETARY TO MOLEX INCORPORATED AND SHOULD NOT BE USED WITHOUT WRITTEN PERMISSION																	



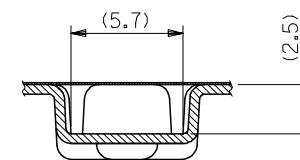
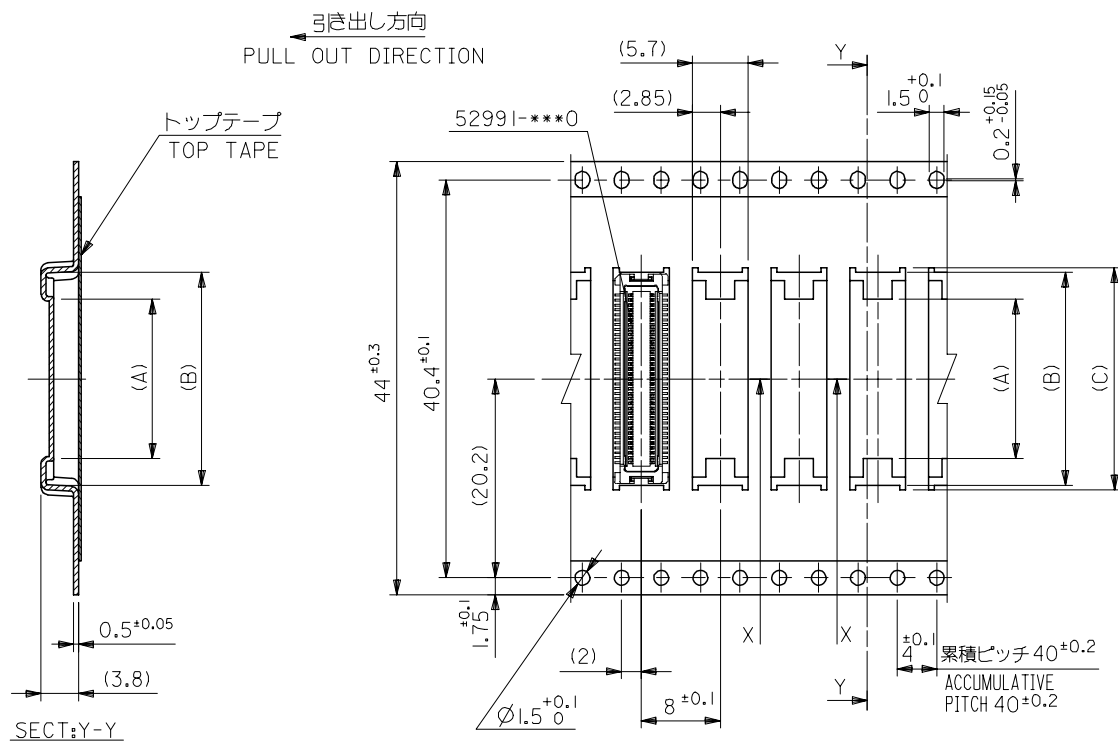
32mm幅キャリアテープ
32mm WIDTH CARRIER TAPE

REVISED EC NO: J2006-0604 DRWN: AIDA CHKD: KTOYODA APPR: NUKITA	DESCRIPTION REV	52991-***8		MODEL NO.	32	37.4	33.4	17.6	16.6	11.2	52991-0508	50	
					キャリアテープ幅 CARRIER TAPE WIDTH	E	D	(C)	(B)	(A)	MATERIAL NO.	極数 CKT.	
		GENERAL TOLERANCES (UNLESS SPECIFIED)			DIMENSION STYLE MM ONLY			SCALE ---	DESIGN UNITS METRIC		THIRD ANGLE PROJECTION		
		10 UNDER		± ---	DRAWN BY T. YASUI		DATE '96/04/15		TITLE 0.5 B/B CONN REC HSG ASSY EMBSTP PKG -LEAD FREE-				
		10 OVER 30 UNDER		± ---	CHECKED BY T. ITO		DATE '01/01/31						
		30 OVER		± ---	APPROVED BY M. FUKUSHIMA		DATE '01/01/31		MOLEX INCORPORATED				
		ANGULAR ± --- °		MATERIAL NO.			DOCUMENT NO.					SHEET NO.	
		DRAFT WHERE APPLICABLE MUST REMAIN WITHIN DIMENSIONS			SEE CHART			SD-52991-005					4 OF 6
					SIZE A3		THIS DRAWING CONTAINS INFORMATION THAT IS PROPRIETARY TO MOLEX INCORPORATED AND SHOULD NOT BE USED WITHOUT WRITTEN PERMISSION						



32mm幅キャリアテープ
32mm WIDTH CARRIER TAPE

REVISED EC NO: J2006-0604 DRWN: AIDA CHKD: KTOYODA APPR: NUKITA	DESCRIPTION REV	52991-***8		MODEL NO.	32	37.4	33.4	20.1	19.1	13.7	52991-0608	60
					キャリアテープ幅 CARRIER TAPE WIDTH	E	D	(C)	(B)	(A)	MATERIAL NO.	極数 CKT.
		GENERAL TOLERANCES (UNLESS SPECIFIED)			DIMENSION STYLE MM ONLY			SCALE ---	DESIGN UNITS METRIC		THIRD ANGLE PROJECTION	
		10 UNDER		± ---	DRAWN BY S. AIHARA		DATE '96/04/01		TITLE 0.5 B/B CONN REC HSG ASSY EMBSTP PKG -LEAD FREE-		MOLEX INCORPORATED	
		10 OVER 30 UNDER		± ---	CHECKED BY T. ITO		DATE '01/01/31					
		30 OVER		± ---	APPROVED BY M. FUKUSHIMA		DATE '01/01/31					
		ANGULAR ± --- °			MATERIAL NO.			DOCUMENT NO.			SHEET NO.	
DRAFT WHERE APPLICABLE MUST REMAIN WITHIN DIMENSIONS			SEE CHART			SD-52991-005			5 OF 6			
D		THIS DRAWING CONTAINS INFORMATION THAT IS PROPRIETARY TO MOLEX INCORPORATED AND SHOULD NOT BE USED WITHOUT WRITTEN PERMISSION										



SECT:X-X
(SCALE 4:1)

44mm幅キャリアテープ
44mm WIDTH CARRIER TAPE

44	49.4	45.4	25.1	24.1	18.7	52991-0808	80
			22.6	21.6	16.2	52991-0708	70
キャリアテープ幅 CARRIER TAPE WIDTH		E	D	(C)	(B)	(A)	MATERIAL NO. 極数 CKT.

52991-***8 MODEL NO.

REVISED EC NO: J2006-0604 DR:WNAIDA 2005/08/31 CHK:KTOYODA 2005/09/01 APPR:NUKITA 2005/09/09 D	DESCRIPTION	GENERAL TOLERANCES (UNLESS SPECIFIED)		DIMENSION STYLE MM ONLY		SCALE ---	DESIGN UNITS METRIC	THIRD ANGLE PROJECTION		
		10 UNDER	± ---	DRAWN BY T. YASUI	DATE '96/04/15	TITLE 0.5 B/B CONN REC HSG ASSY EMBSTP PKG -LEAD FREE-				
		10 OVER 30 UNDER	± ---	CHECKED BY T. ITO	DATE '01/01/31					
		30 OVER	± ---	APPROVED BY M. FUKUSHIMA	DATE '01/01/31	MOLEX INCORPORATED				
		ANGULAR	± --- °	MATERIAL NO.	DOCUMENT NO.					
		DRAFT WHERE APPLICABLE MUST REMAIN WITHIN DIMENSIONS		SEE CHART		SD-52991-005				
				SIZE A3		THIS DRAWING CONTAINS INFORMATION THAT IS PROPRIETARY TO MOLEX INCORPORATED AND SHOULD NOT BE USED WITHOUT WRITTEN PERMISSION				